



Key and recommended walking & cycling routes

St Anthony's Catholic Primary School & Nursery

Walking & cycling map

About the map

Slough Borough Council commissioned Living Streets to work with four schools across Slough to prepare walking and cycle maps. The maps have been developed by Living Streets with artistic input from St Anthony's Catholic Primary School & Nursery pupils. The maps provide both key and recommended safe walking routes provided by Living Streets and cycle routes provided by Sustrans.



The national charity working to create safe, attractive, enjoyable streets where people want to walk.

www.livingstreets.org.uk

Registered Charity No. 1108448 (England and Wales)

Walking & cycling map

St Anthony's Catholic Primary School & Nursery

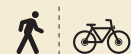
www.stanthonys.slough.sch.uk

Farnham Road, Slough, SL2 3AA.
01753 645828

St Anthony's Catholic Primary School & Nursery is committed to encouraging pupils to walk and cycle to and from school whenever possible. Active travel is essential to enhance pupils' motivation and confidence.

There are two entrances to the school. The main entrance is on Farnham Road. For students walking and cycling there is a pelican crossing provided near the main entrance. The rear entrance is located on Stafford Avenue.

Walking & cycling from Britwell



Walk & cycle from Britwell 10 to 15 minutes

The cycling route is for experienced cyclists.

- 1 Walk or cycle along Monksfield Way, then
- 2 Long Readings Lane
- 3 Bridport Way
- 4 Cut through Penzance Spur footway
- 5 Farnham Road, crossing to the main entrance.

Walking & cycling from Kennedy Park



Walk & cycle from Kennedy Park 10 to 15 minutes

The cycling route is for experienced cyclists.

- 1 Walk or cycle along Northborough Road, then
- 2 Long Readings Lane
- 3 Bridport Way
- 4 Cut through Penzance Spur footway
- 5 Farnham Road, crossing to the main entrance.



Walking & cycling from Manor Park



Walk from Manor Park 10 to 15 minutes

There are multiple walking routes from Manor Park to the school rear entrance or main entrance.

Cycle from Manor Park 5 to 10 minutes

Cyclists take care when using the Cinder Track at Villiers Road and also on Cumberland Avenue. There is a signalised crossing here.

- 1 Hawthorne Crescent
- 2 Granville Avenue
- 3 Canterbury Avenue via Cinder Track
- 4 Stafford Avenue-Wiltshire Avenue to access the rear school entrance.

Walking & cycling from Godolphin Playing Fields



Walk from Godolphin Playing Fields 10 to 20 minutes

There are multiple walking routes from Godolphin Playing Fields area. The most direct route is through Manor Park.

Cycle from Stoke Poges Lane 10 to 20 minutes

- 1 Cyclists dismount at the Stoke Poges Lane pelican crossing
- 2 Cycle along Granville Avenue on road
- 3 Use the Cinder Tracks east of Canterbury Avenue
- 4 Follow directions from Manor Park as before.



Artistic input from St Anthony's Catholic Primary School & Nursery pupils



About Living Streets

Living Streets is the national charity that stands up for pedestrians. With our supporters we work to create safe, attractive and enjoyable streets, where people want to walk. Living Streets has run the Walk to School campaign since 1995. It now reaches more than 1.9 million children each year.

The Walk to School campaign's aim is simple: to encourage all parents, children and young people to make walking to school part of their daily routine. Our vision is that every child who can walk to school does so. Living Streets offer a wide range of classroom resources, lesson plans and national schemes that help over 6,800 primary and secondary schools to promote walking. For more information, visit

www.livingstreets.org.uk

About Sustrans

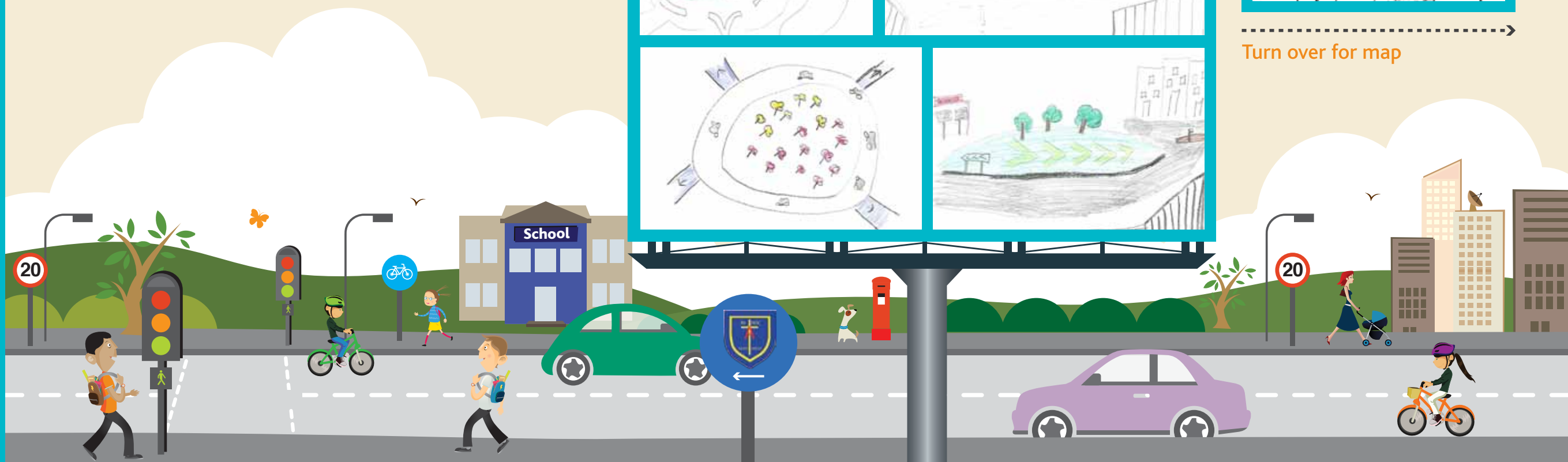
Sustrans is the charity that's enabling people to travel by foot, bike or public transport for more of the journeys we make every day.

Visit www.sustrans.org.uk



Walking and cycling to school can be beneficial to children, helping them learn vital road safety skills, to interact with their local environment and to become 'streetwise' and develop independence.








Turn over for map



St Anthony's Catholic Primary School & Nursery

KEY  

-  On-road cycle route
-  Traffic free cycle route
-  Walking & cycle route
-  Key walking route
-  Take extra care here

